

## DP-21

Digital Ultrasonic Diagnostic Imaging System



# DP-21

Digital Ultrasonic Diagnostic Imaging System

Good image quality and compact ergonomic design with Full Screen, make the new DP-21 <sup>Power</sup> edition your ideal choice of B/W ultrasound. DP-21 <sup>Power</sup> edition can accompany you at an all new level. Built-in battery and mobile trolley provides you a limitless ultrasound solution.



## Ergonomic Mobile Design with Full Screen

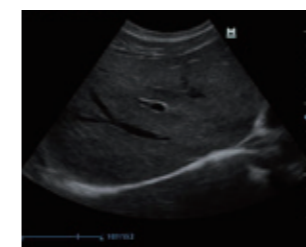
- 12.1 inch high definition LED with full screen design
- 30 degree tilting angle adjustable monitor
- 1 universal transducer connector
- User friendly control panel with backlit
- Light and compact design for extreme portability

## Advanced Imaging Technologies

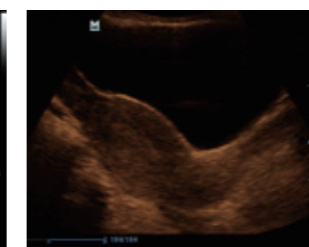
- Tissue Harmonic Imaging for enhanced contrast resolution
- iClear for Speckle Reduction Imaging, providing clear and sharp lesion contours
- iTouch for quick image optimization
- iZoom for instant full screen image zoom

## Convenient Workflow

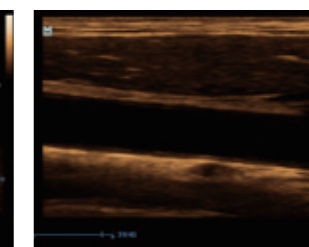
- iScanHelper offers ultrasound tutorial for your practice
- iStorage for instant images and reports transfer to PC
- User-defined keys for programmable personalized operations
- 1.5h uninterrupted scanning with rechargeable battery
- 500GB hard disk for large patient data storage



Liver



Uterus



Carotid